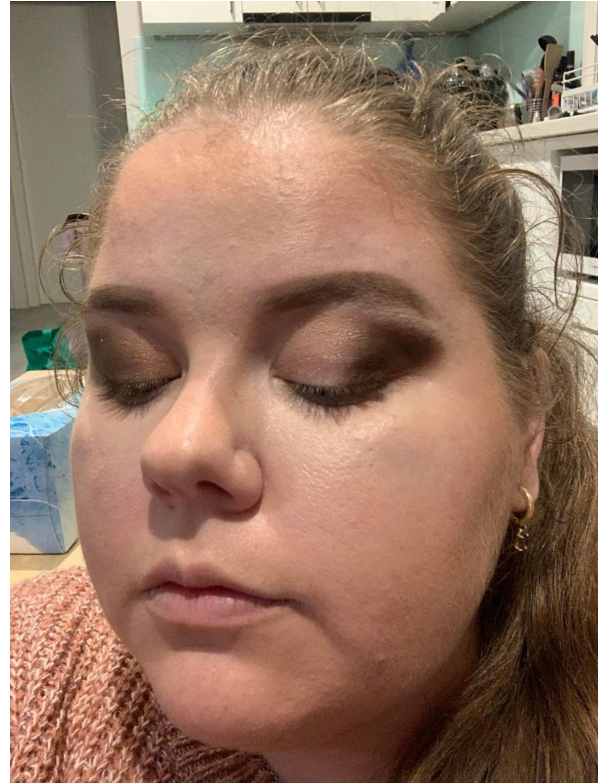




- EYESHADOW

1 • DARK CONTOUR– Use **Brown** colour. With a clean brush apply the brown on the outer third of the eyelid and into the crease. Starting from the outside and working in (then you won't have the blob of darker colour on the inside).



2 • INNER THIRD EYELID- Use **Rose Shimmer** colour. With a clean flat brush or finger slightly wet with setting/primer spray or water, apply rose colour to inner third of eyelid blending towards the brown.

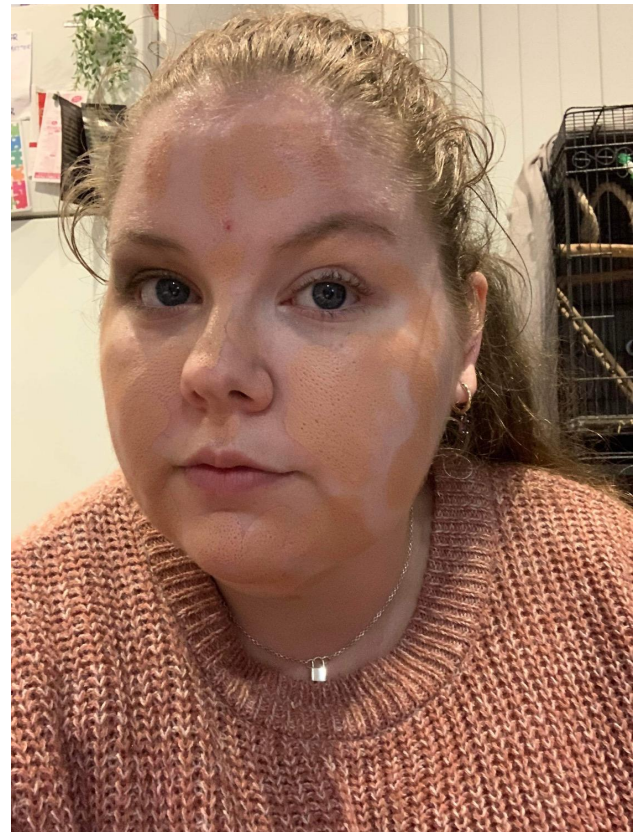


3 • MIDDLE THIRD EYELID- Use **Gold** colour. With a clean flat brush or finger slightly wet with setting/primer spray or water, Blend between the two shades on the centre of eyelids starting towards the outer edge (brown) and working inwards filling the centre of the eyelid.

• Apply sparkle dust **Opal** to the brow bone, just under the eyebrow.

• **Always** blend the colour upward and outward until there is no "edge" to the colour.

- FOUNDATION – Stroke across forehead, down nose and cheeks and across chin. Blend up to hairline, down towards jaw line using fingers or makeup sponge ensuring even coverage. Apply down your neck also and blend so no line is visible between your skin and the pan stick



- CONCEALER - Apply concealer under eyes in a triangle shape, in the centre of the forehead and along the bridge of your nose. Blend out with sponge into edges of foundation.



- CONTOUR- Apply either cream or powder contour to hollows of cheeks, above temples in hairline, (down the bridge of your nose and under lip optional). Blend upwards and outwards using a sponge or brush.

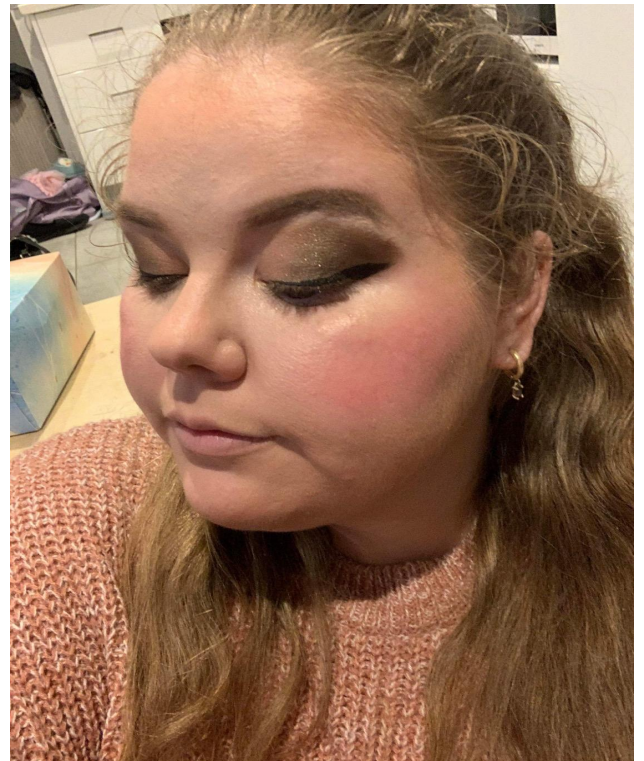


- EYEBROWS - Fill in your eyebrows with eyebrow pencil. Apply tiny fine strokes emphasising your natural brow line. All eye makeup should be darker if you wear glasses.
- EYELINER – Apply black eyeliner (liquid) to top eyelid. Start very fine at the inner corner and ending thicker at the outer edge **THEN** in an upward direction on an angle for about ½ cm or a tad more (this gives your eyes a lovely lift). Apply eyeliner (pencil) to outer half of the bottom lids to emphasise your eyes.

- **MASCARA -**

Mascara top & bottom blending. Allow lashe to dry and add coats of mascara as needed till desired fullness

- BLUSH – **Red pot** colour. Smile to find your cheek bone line and see where to apply the blush. **Red Pot** - use the red sparingly to start with (its easier to apply a little more if needed than to take off). Start from the outside/top of your cheek bone and dab the red colour on gradually working down at an angle to your cheek. **Blend.**



- LIPLINER – apply red lip liner to outer edges of lips and fill in with pencil.

- LIPSTICK – Then apply two coats of approved chorus colour **Rimmel “Provocalips” 16 hour - 500 Kiss Me You Fool Finish with gloss.**
- BRONZER – Apply bronzing powder over the face, ears and neck.
- HIGHLIGHTER- Apply Chorus Sparkle Dust (la femme Hollywood – Opal) sparingly to the tops of your cheeks in an upward sweeping motion towards your temple. with a brush. A little of this product goes a long way.

